



# WELCOME

to our 17<sup>th</sup> century farmhouse,  
the Pear Tree Inn

Please be aware that the Pear Tree Inn is not occupied at night. In an emergency, you should first dial 999. If the emergency is not life threatening, you are able to contact the duty manager on 07834959724.

Please note, this number will only be available outside of our normal opening hours overleaf.

# **TREE INN** FARMHOUSE KITCHEN

## **Bar**

Monday-Thursday

10:00-22:00

Friday & Saturday

10:00-23:00

Sunday

10:30-22:00

## **Dining Room**

Monday – Thursday

12:00-14:30, 18:00-21:00

Friday & Saturday

12:00-14:30, 17:30-21:30

Sunday

12:00-16:00, 18:00-20:00

## **CHECK OUT**

Guests are requested to check out by 10:30, handing all keys in to reception. Extended checkout, where available, will incur an additional charge of £25.00

## **COMPLIMENTARIES**

If you require a top-up on your Bramley toiletries, Purezza water, Cosy tea or Easy Jose coffee – Just ask. Should you find yourself short, we also have a selection of amenities including ear plugs, shower caps, toothbrush & toothpaste, ladies' kits, razors, combs, hairbands/grips, sewing kits. An iron & ironing board is available upon request.

## **HEATING**

Please feel free to adjust the temperature of your room by using the dial on the side of each radiator.

## **WIFI**

Guests residing in our Upstairs Pears can join the 'Guest Wifi' with no password. Guests in the Garden Pears can join with the password 'Braml3y! '.







## Lacock Abbey, Fox Talbot Museum & Village

Lacock Abbey, located in the centre of the village was founded in the 13th century and dissolved in 1539. Later, it became a quirky country house of various architectural styles within its own woodland grounds.

It was a home for the Talbot family, including William Henry Fox Talbot 19th century, famous for his contributions towards the invention of the photographic negative. His amazing achievements are celebrated in the Fox Talbot Museum on the ground floor and the gallery above holds special exhibitions throughout the year.

Wander through the Medieval cloisters, and 16th century stable courtyard, explore the furnished rooms and discover the 18th century Gothick hall.

There are lots of opportunities to bring the family or friends and join in with our regular seasonal events, activities and trails in the grounds.

Take a pleasant walk through the village where you can enjoy a meal or shopping.

Lacock village and Lacock Abbey have been used as a location in TV and film productions of Wolfman, Pride and Prejudice, Cranford Chronicles, Emma and Harry Potter films.



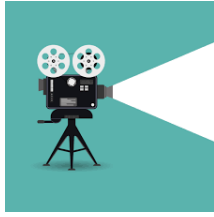
# AROUND & ABOUT

Around & About Bath's tours are very different to any other tour you may have taken. Their tours are much more than sightseeing. They create experiences; Journeys into authentic England to share with their guests the very best of the area's sights, culture, stories, food and drink.

They create carefully designed itineraries that show visitors to the Bath area authentic, quintessential England that combine must-see places like Stonehenge or the Cotswolds with the local, hidden delights that only locals know. Getting off the beaten track and under the surface, exploring country roads, hidden villages and lost stories to give their guests a real flavour of this fabulous region. Combine this with the best food and drink experiences in the region and you have an outstanding and unique experience.

Every tour is personal, relaxed and small, allowing them to get to know you personally and sharing an amazing day full of unique experiences that other travellers miss... They really do offer something different, special and unique!





## Independent Cinemas in Wiltshire

**Westway Cinema, Frome**, a 3 screen independent cinema in the heart of Frome; a welcoming, charming and vibrant place to visit, with a wealth of history, culture and natural beauty.



**Westway Cinema**

01373 471612

[westwaycinema.co.uk](http://westwaycinema.co.uk)

**The Palace Cinema, Devizes**, pride themselves on giving their customers a unique environment to see films and events using state of the art technology. Providing an excellent, friendly service.



**The Palace Cinema**

01373 471612

[devizescinema.co.uk](http://devizescinema.co.uk)





## Stonehenge, English Heritage

A walk around the Stone Circle is the centrepiece of any visit to the Stonehenge and Avebury World Heritage Site. With a history spanning 4,500 years Stonehenge has many different meanings to people today. It is a wonder of the world, a spiritual place and a source of inspiration.

The Stone Circle is a masterpiece of engineering, and building it would have taken huge effort from hundreds of well-organised people using only simple tools and technologies. Visit Stonehenge to find out more about this iconic symbol of Britain.

Discover the story of Stonehenge: the Stones, the landscape, the people and its meaning, through a powerful combination of cutting-edge audio-visual experiences and incredible ancient objects.

Over 250 archaeological objects and treasures discovered in the landscape, are displayed together at Stonehenge for the first time. Ranging from jewellery, pottery and tools to ancient human remains, many of these items are on loan from our museum partners, Salisbury Museum and Wiltshire Museum.





## Independent Shopping in Frome

Frome is an amazing shopping destination. It takes great pride in the creativity and diversity of its many independent shops. The town has always stood as a successful commerce and market town, and despite the decline of the silk trade it continues to thrive. This is due to the success of its dedicated entrepreneurs and skilled craftsmen and artists.

There are some well-known national chains here, however the best way to visit Frome is by wandering along its medieval shopping streets and browsing the many unique stores. Here you will find clothing, jewellery, arts, home décor, books and stationery, antique and vintage goods. And while you're shopping, don't forget to stop by for food and drink at the independent cafes and restaurants.







## Explore Bradford on Avon

With the River Avon at its heart, the golden town of Bradford on Avon lies at the southern edge of the Cotswolds, surrounded by glorious countryside. It is no wonder that this special place has drawn people to the area since the Iron Age – for many different reasons.

Wander into town along the canal or riverside, and you can't miss the superb town bridge – parts of which date back to the 13th century. Its nine arches span the Avon, and at its centre is a medieval pilgrim chapel, later converted into a 'lock-up' for undesirables. Although the Town Council hold the keys, rest assured it is now only open to visitors on World Heritage Open Days!

Bradford on Avon's staple industry for six centuries was wool and weaving, starting in the 14th century. The mechanisation of the wool industry in the late 18th century saw the construction of the great mills that still dominate the town's architecture, along with the rows – or 'ranks' – of weavers' cottages lining the hillsides and streets, punctuated by the grand houses of wealthy clothiers.



**Bradford on Avon  
Town Council**

01225 865797

[bradfordonavon.co.uk](http://bradfordonavon.co.uk)





## Welcome to Bath

Built for pleasure and relaxation, beautiful Bath has been a wellbeing destination since Roman times. The waters are still a big draw, both at the ancient Roman Baths and the thoroughly modern Thermae Bath Spa, which houses the only natural thermal hot springs in Britain you can bathe in.

Bath's compact, visitor-friendly centre is overflowing with places to eat and drink, plus some of the finest independent shops in Britain, making it the ideal city to visit. Immerse yourself in Bath's remarkable collection of museums and galleries, and enjoy year-round festivals, theatre, music and sports.

Bath's stunning honey-coloured Georgian architecture is straight from a Jane Austen novel – highlights include the iconic Royal Crescent and the majestic Circus.





# Pear

---

# TREE INN

---

## FARMHOUSE KITCHEN

**If you require assistance,  
please do not hesitate to contact a member of the Perfect Team.**

**[sleep@peartreewhitley.co.uk](mailto:sleep@peartreewhitley.co.uk)**

**01225 704966**

**Pear Tree Inn, Top Lane, Whitley SN12 8QX**

**[www.peartreewhitley.co.uk](http://www.peartreewhitley.co.uk)**